

■ BM-21S | STAINLESS STEEL BEVELLER

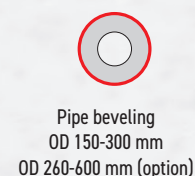
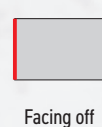
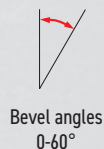
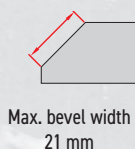
The BM-21S Beveling Machine is designed for milling edges of plates and pipes made of stainless steels. The machine enables to bevel sheet edges as well as pipe edges with diameters from 150 mm (6") to 300 mm (12") in 0-60° range with maximum bevel width of 21 mm (13/16").

When equipped with an optional guide, BM-21S allows working on pipes with diameters over 300 mm (12").



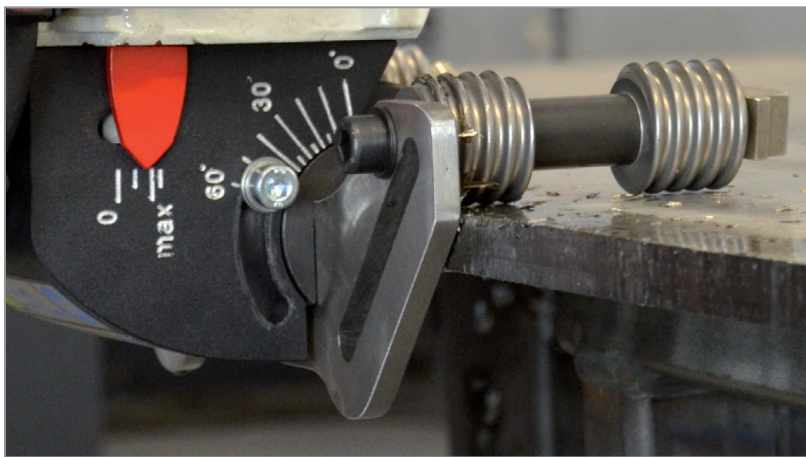
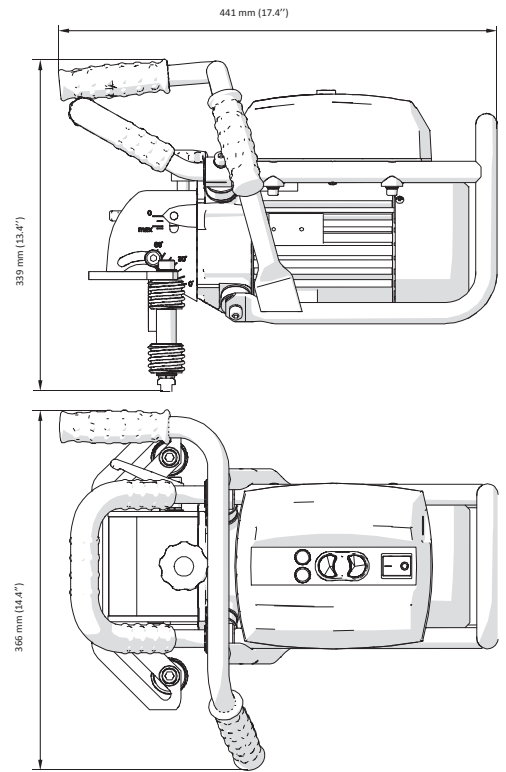
■ Most important features include:

- low speed motor suitable for machining stainless steel
- guide plate with guide rolls made of stainless steel
- up to 21 mm bevel width at 45°
- beveling angles adjusted continuously between 0 to 60°
- new single milling head equipped with 10 square inserts makes machining process far more efficient and much less operator fatiguing
- fast and easy inserts exchange with no need for special adjustment
- easy setting of bevel angle and bevel width
- vibration insulation protects both the operator and electronics against vibration
- one universal guide plate for beveling both plates and pipes



BM-21S TECHNICAL SPECIFICATION

| | |
|----------------------------------|--|
| Power supply | 230 V AC / 50 Hz or 115 V AC / 60 Hz |
| Induction motor | with increased start-up current |
| Power | 1600 W (for 50 Hz); 1800 W (for 60 Hz) |
| Spindle speed | 1360-1630 rpm (at 230 V) 1300-1560 rpm (at 115 V) |
| Tooling | integrated milling head with 10 square TCT inserts |
| Beveling angle | 0-60° with continuous angle adjustment |
| Max bevel width | 21 mm (13/16") |
| Weight Approx. | 23 kg (51 lbs) |
| Product Code 220-240 V, 50-60 Hz | UKS-0505-10-20-00-0 |
| Product Code 110-120 V, 50-60 Hz | UKS-0505-10-10-00-0 |



Continuous angle adjustment from 0 to 60°.



Standard universal guide plate made of Stainless Steel for beveling both plates and pipes Ø 150-300 mm (6-12")



Plate facing-off



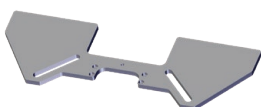
Plate beveling



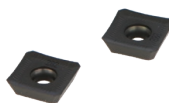
Pipe beveling



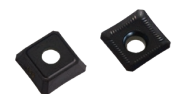
Mono block milling head, with 10 indexable inserts fixed with screws.
Product code: GLW-0461-03-00-00-0



Optional guide for pipes Ø 260-600mm (10-24")
Product code: PRW-0505-03-00-00-0



Cutting Insert (1 piece), sold 10 pcs/box
Product code: PLY-000282



Cutting Insert HD (1 piece), sold 10 pcs/box
Product code: PLY-000591

All information is subject to change without notice. 21.11



PROMOTECH Sp. z o.o.
ul. Elewatorska 23/1, 15-620 BIAŁYSTOK, POLAND
tel. (+48 85) 678 34 05, fax (+48 85) 662 78 77
marketing@promotech.eu www.promotech.eu

Your local dealer:

